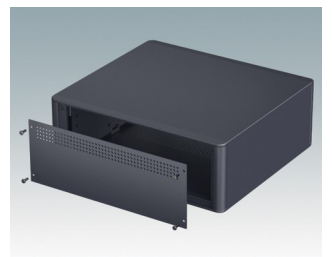
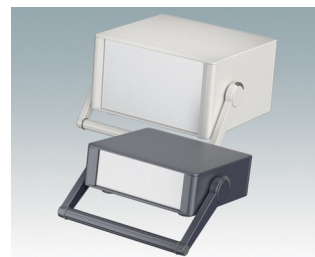
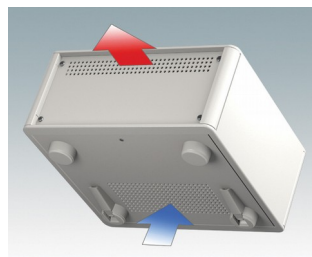
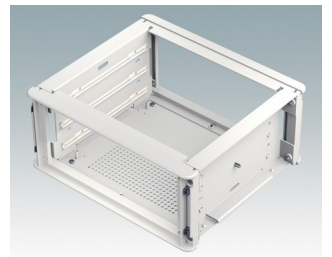
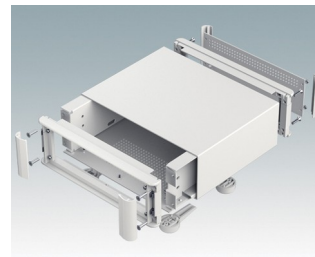
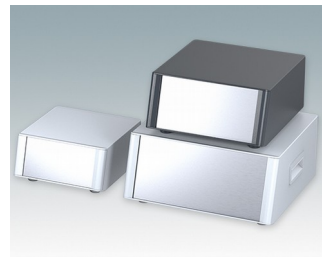
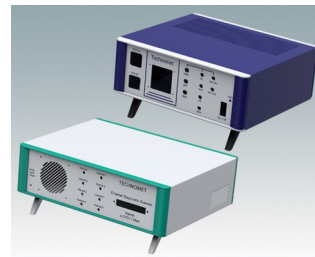
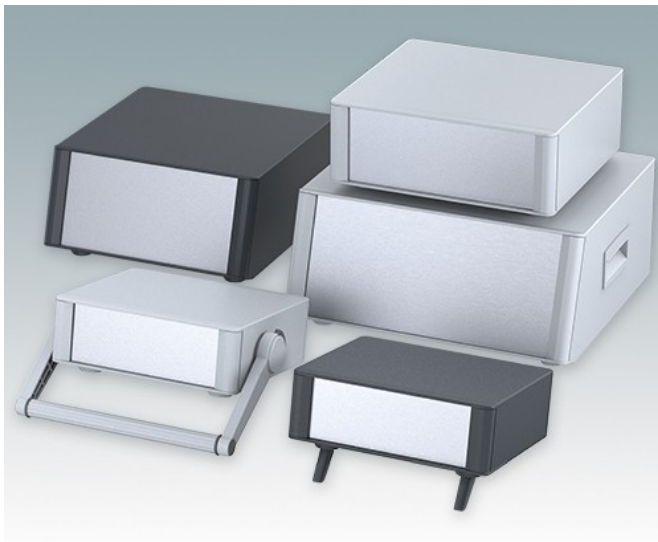


Highly attractive instrument enclosures

- Advanced desktop and portable enclosures in eight standard sizes all with ventilation
- Modern and cohesive design with no visible fixing screws.
- Die cast front and rear bezels fit flush with the case body for a smooth appearance
- Snap-on front trims hide the case and front panel fixing screws
- All sizes available with or without a tilt/swivel carry handle, or ABS sides handles (150 mm version)
- Three sizes with sloping front bezel
- Base panel pre-fitted with four M3 PCB mounting pillars
- Internal chassis prepunched for fitting snap-in PCB guides (accessories) in 3, 5, 7 or 9 positions
- Removable rear panel - recessed for protection of connectors, switches etc.
- Anodised front panel (accessory) - recessed for protection of keypads, displays etc.
- All case panels fitted with M4 threaded pillars for earth connection
- Supplied with four modern ABS feet with non-slip pads.

Order your own fully customised version [learn more here >>](#)



Select Versions



M6422024
Technomet R107
Aluminium
Anthracite RAL 7016
225x200x75mm



M6422025
Technomet R107
Aluminium
Light grey RAL 7035
225x200x75mm



M6422034
Technomet R107H
Aluminium
Anthracite RAL 7016
225x200x75mm



M6422035
Technomet R107H
Aluminium
Light grey RAL 7035
225x200x75mm



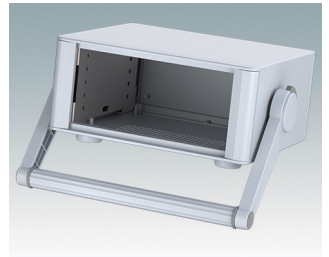
M6422124
Technomet R110
Aluminium
Anthracite RAL 7016
225x200x100mm



M6422125
Technomet R110
Aluminium
Light grey RAL 7035
225x200x100mm



M6422134
Technomet R110H
Aluminium
Anthracite RAL 7016
225x200x100mm



M6422135
Technomet R110H
Aluminium
Light grey RAL 7035
225x200x100mm



M6423124
Technomet SL110
Aluminium
Anthracite RAL 7016
225x230x100mm



M6423125
Technomet SL110
Aluminium
Light grey RAL 7035
225x230x100mm



M6427124
Technomet R210
Aluminium
Anthracite RAL 7016
275x250x100mm



M6427125
Technomet R210
Aluminium
Light grey RAL 7035
275x250x100mm



M6427134
Technomet R210H
Aluminium
Anthracite RAL 7016
275x250x100mm



M6427135
Technomet R210H
Aluminium
Light grey RAL 7035
275x250x100mm



M6427224
Technomet R212
Aluminium
Anthracite RAL 7016
275x250x125mm



M6427225
Technomet R212
Aluminium
Light grey RAL 7035
275x250x125mm



M6427234
Technomet R212H
Aluminium
Anthracite RAL 7016
275x250x125mm



M6427235
Technomet R212H
Aluminium
Light grey RAL 7035
275x250x125mm



M6427334
Technomet R215H
Aluminium
Anthracite RAL 7016
275x250x150mm



M6427335
Technomet R215H
Aluminium
Light grey RAL 7035
275x250x150mm



M6427354
Technomet R215S
Aluminium
Anthracite RAL 7016
275x250x150mm



M6427355
Technomet R215S
Aluminium
Light grey RAL 7035
275x250x150mm



M6428224
Technomet SL212
Aluminium
Anthracite RAL 7016
275x285x125mm



M6428225
Technomet SL212
Aluminium
Light grey RAL 7035
275x285x125mm



M6435124
Technomet R310
Aluminium
Anthracite RAL 7016
350x275x100mm



M6435125
Technomet R310
Aluminium
Light grey RAL 7035
350x275x100mm



M6435134
Technomet R310H
Aluminium
Anthracite RAL 7016
350x275x100mm



M6435135
Technomet R310H
Aluminium
Light grey RAL 7035
350x275x100mm



M6435224
Technomet R312
Aluminium
Anthracite RAL 7016
350x275x125mm



M6435225
Technomet R312
Aluminium
Light grey RAL 7035
350x275x125mm



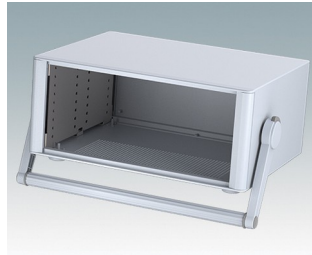
M6435234
Technomet R312H
Aluminium
Anthracite RAL 7016
350x275x125mm



M6435235
Technomet R312H
Aluminium
Light grey RAL 7035
350x275x125mm



M6435334
Technomet R315H
Aluminium
Anthracite RAL 7016
350x275x150mm



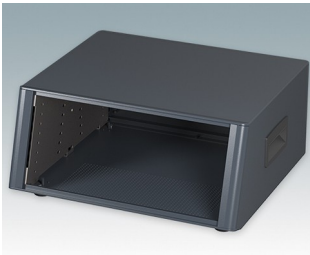
M6435335
Technomet R315H
Aluminium
Light grey RAL 7035
350x275x150mm



M6435354
Technomet R315S
Aluminium
Anthracite RAL 7016
350x275x150mm



M6435355
Technomet R315S
Aluminium
Light grey RAL 7035
350x275x150mm

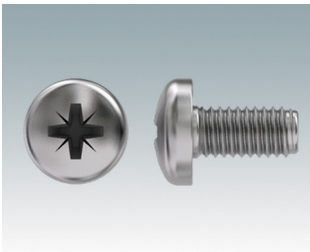


M6436324
Technomet SL315S
Aluminium
Anthracite RAL 7016
350x320x150mm

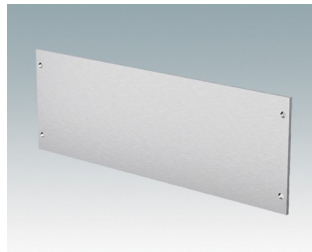


M6436325
Technomet SL315S
Aluminium
Light grey RAL 7035
350x320x150mm

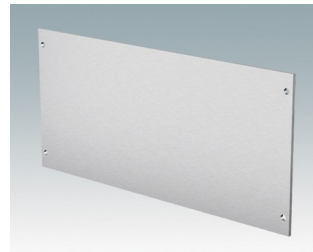
Accessory



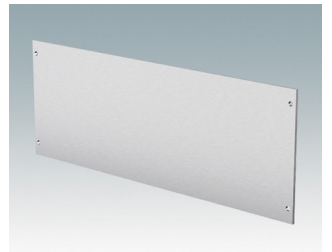
M5600010
PCB/Panel Fixing Screws, M3
Steel
Zinc coated
6mm



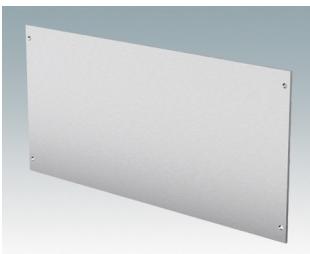
M6400700
Front Panel 107
Aluminium
Matt anodised
197x2x65.8mm



M6400701
Front Panel 110
Aluminium
Matt anodised
197x2x90.8mm



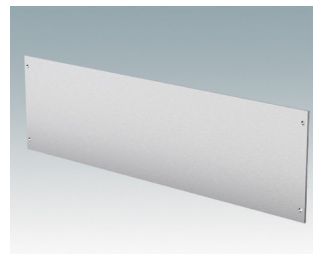
M6400702
Front Panel 210
Aluminium
Matt anodised
247x2x90.8mm



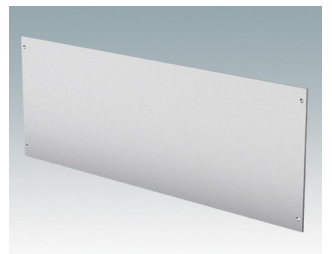
M6400703
Front Panel 212
Aluminium
Matt anodised
247x2x115.8mm



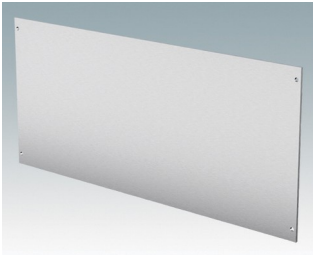
M6400704
Front Panel 215
Aluminium
Matt anodised
247x2x140.8mm



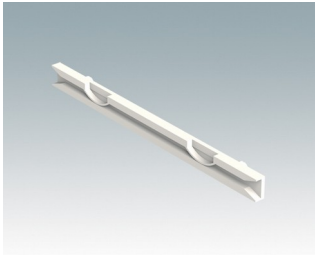
M6400705
Front Panel 310
Aluminium
Matt anodised
322x2x90.8mm



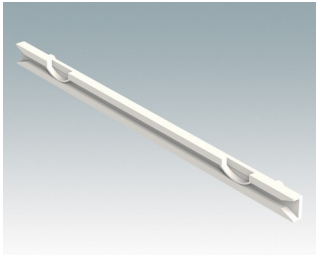
M6400706
Front Panel 312
Aluminium
Matt anodised
322x2x115.8mm



M6400707
Front Panel 315
Aluminium
Matt anodised
322x2x140.8mm



M6490010
PCB Guide, 102 mm
PA 6/6 (UL 94 V-0)
Natural finish
101.6x7.5x3.5mm



M6490020
PCB Guide, 140 mm
PA 6/6 (UL 94 V-0)
Natural finish
139.7x7.5x3.5mm

Subject to technical modification without notice. © OKW Enclosures Ltd