

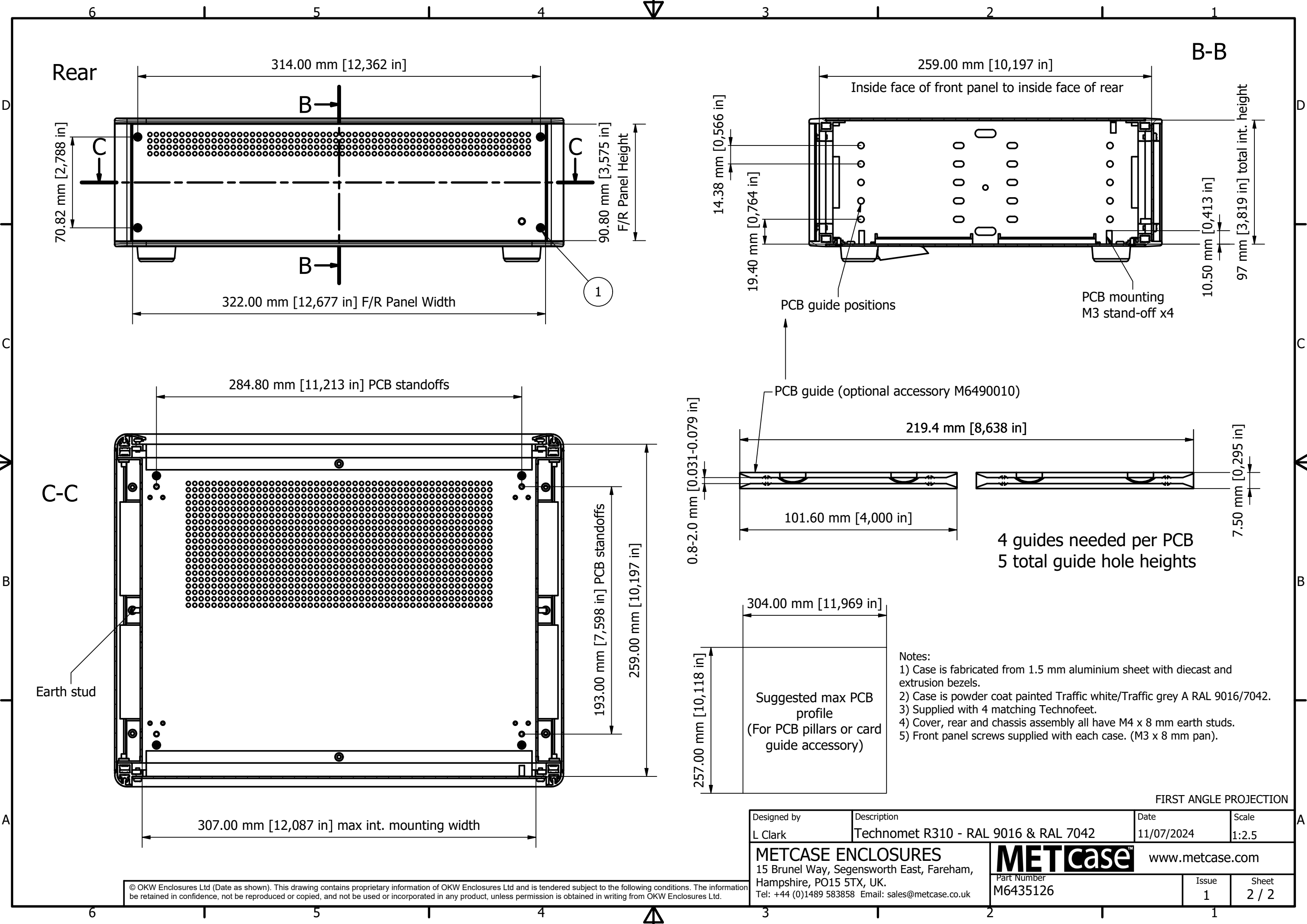
PARTS LIST			
ITEM	QTY	PART NUMBER	DESCRIPTION
1	8	M3x8mm Pan	Rear/Front Panel Screws
2	8	M4x16mm CSK	Bezel Assembly Screws
3	8	M3x6mm CSK	Base Panel Screws
4	8	M6420000	Clip for Trims
5	2	M6420205 flat	Rear Non-Tilt Feet
6	2	M6420205 tilt	Front Tilt Feet
7	1	M6402615	Wrap Around Cover
8	1	M6403365	Base/Internal Sides Sub-Assy
9	1	M6403465	Rear Panel - 1.5 mm thick
10	2	M6401065	Front/Rear Bezel
11	2	M6400053	Front Trim
12	2	M6400073	Rear Trim

Front panel (M6400705) sold seperately

© OKW Enclosures Ltd (Date as shown). This drawing contains proprietary information of OKW Enclosures Ltd and is tendered subject to the following conditions. The information be retained in confidence, not be reproduced or copied, and not be used or incorporated in any product, unless permission is obtained in writing from OKW Enclosures Ltd.

Designed by L Clark	Description Technomet R310 - RAL 9016 & RAL 7042	Date 11/07/2024	Scale 1:2.5
<b>METCASE ENCLOSURES</b> 15 Brunel Way, Segensworth East, Fareham, Hampshire, PO15 5TX, UK. Tel: +44 (0)1489 583858 Email: sales@metcase.co.uk		<b>METcase™</b> www.metcase.com Part Number <b>M6435126</b>	
		Issue 1	Sheet 1 / 2

FIRST ANGLE PROJECTION



Rear

B-B

70.82 mm [2,788 in]

314.00 mm [12,362 in]

259.00 mm [10,197 in]

Inside face of front panel to inside face of rear

90.80 mm [3,575 in]  
F/R Panel Height

322.00 mm [12,677 in] F/R Panel Width

14.38 mm [0,566 in]

19.40 mm [0,764 in]

10.50 mm [0,413 in]

97 mm [3,819 in] total int. height

PCB guide positions

PCB mounting  
M3 stand-off x4

284.80 mm [11,213 in] PCB standoffs

PCB guide (optional accessory M6490010)

C-C

219.4 mm [8,638 in]

0.8-2.0 mm [0.031-0.079 in]

101.60 mm [4,000 in]

7.50 mm [0,295 in]

4 guides needed per PCB  
5 total guide hole heights

Earth stud

193.00 mm [7,598 in] PCB standoffs

259.00 mm [10,197 in]

304.00 mm [11,969 in]

257.00 mm [10,118 in]

Suggested max PCB profile  
(For PCB pillars or card guide accessory)

Notes:

- 1) Case is fabricated from 1.5 mm aluminium sheet with diecast and extrusion bezels.
- 2) Case is powder coat painted Traffic white/Traffic grey A RAL 9016/7042.
- 3) Supplied with 4 matching Technofeet.
- 4) Cover, rear and chassis assembly all have M4 x 8 mm earth studs.
- 5) Front panel screws supplied with each case. (M3 x 8 mm pan).

307.00 mm [12,087 in] max int. mounting width

FIRST ANGLE PROJECTION

Designed by L Clark	Description Technomet R310 - RAL 9016 & RAL 7042	Date 11/07/2024	Scale 1:2.5
<b>METCASE ENCLOSURES</b> 15 Brunel Way, Segensworth East, Fareham, Hampshire, PO15 5TX, UK. Tel: +44 (0)1489 583858 Email: sales@metcase.co.uk		<b>METcase™</b> www.metcase.com Part Number <b>M6435126</b>	
		Issue 1	Sheet 2 / 2

© OKW Enclosures Ltd (Date as shown). This drawing contains proprietary information of OKW Enclosures Ltd and is tendered subject to the following conditions. The information be retained in confidence, not be reproduced or copied, and not be used or incorporated in any product, unless permission is obtained in writing from OKW Enclosures Ltd.