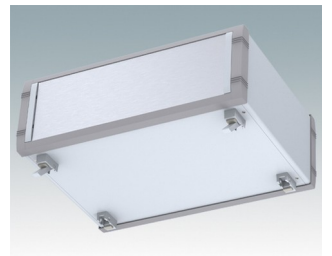
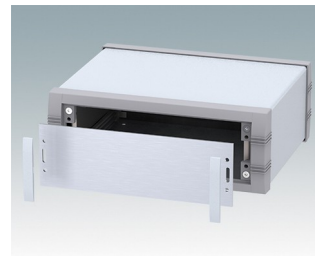
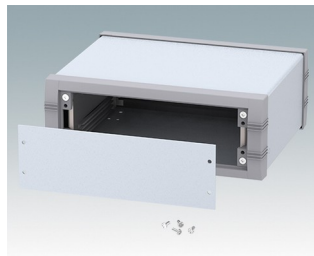
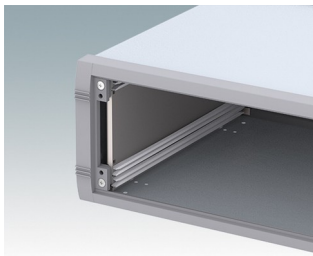
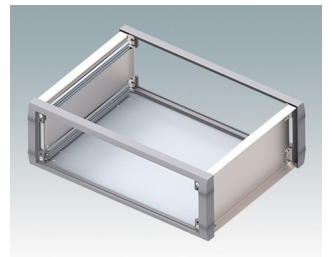
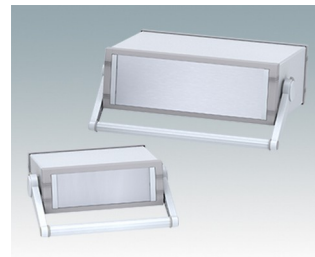
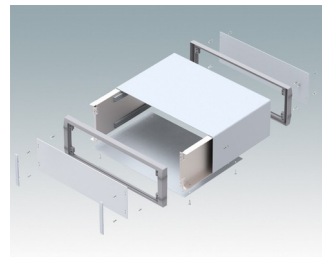
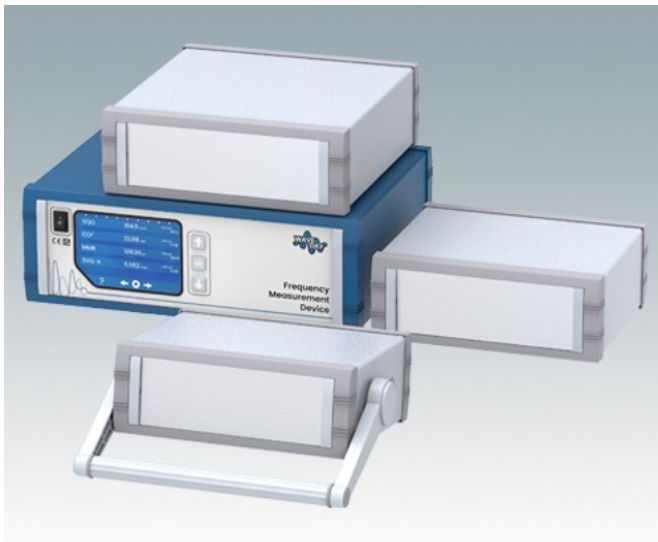


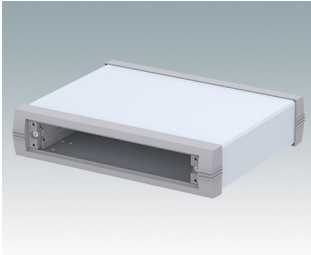
Stylish and versatile instrument enclosures

- Advanced aluminium instrument enclosures with or without a tilt/swivel carry handle
- Robust and versatile design in six sizes
- Internal chassis with horizontal guide positions for slide-in PCBs
- Four snap-in polyamide PCB guides included
- Stylish die cast front and rear bezels assembled to the folded aluminium case body
- Removable rear panel - recessed for protection of connectors, switches etc.
- Recessed aluminium front panel (accessory)
- Four non-slip rubber feet included
- Accessory moulded tilt feet available.

Order your own fully customised version [learn more here >>](#)



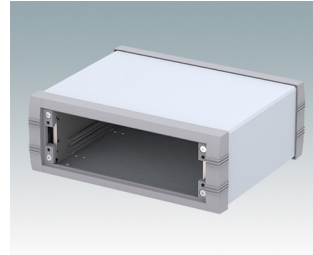
Select Versions



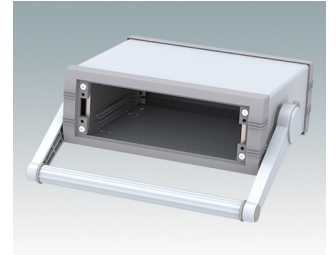
M5623015
UNIMET-PLUS 1
Aluminium
Light grey/window grey RAL
7035/7040
230x193x50mm



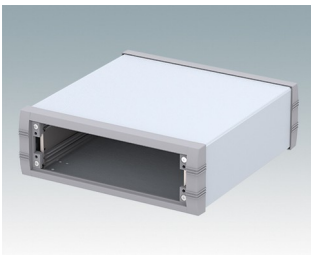
M5623035
UNIMET-PLUS 1H
Aluminium
Light grey/window grey RAL
7035/7040
230x193x50mm



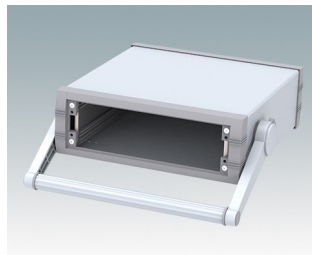
M5623115
UNIMET-PLUS 2
Aluminium
Light grey/window grey RAL
7035/7040
230x193x85mm



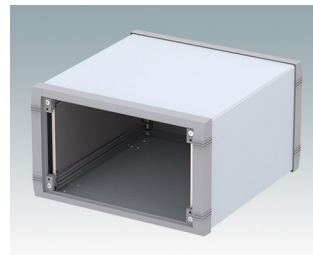
M5623135
UNIMET-PLUS 2H
Aluminium
Light grey/window grey RAL
7035/7040
230x193x85mm



M5625115
UNIMET-PLUS 3
Aluminium
Light grey/window grey RAL
7035/7040
250x263x85mm



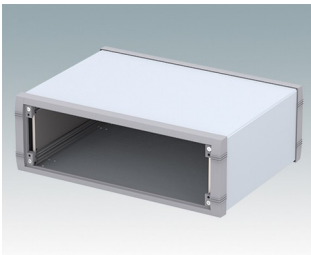
M5625135
UNIMET-PLUS 3H
Aluminium
Light grey/window grey RAL
7035/7040
250x263x85mm



M5625315
UNIMET-PLUS 5
Aluminium
Light grey/window grey RAL
7035/7040
250x263x150mm



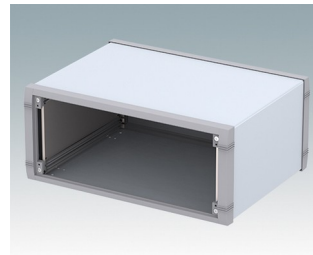
M5625335
UNIMET-PLUS 5H
Aluminium
Light grey/window grey RAL
7035/7040
250x263x150mm



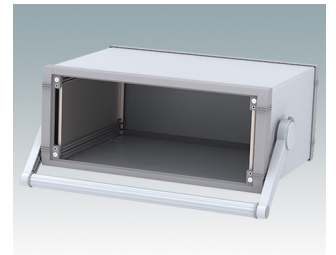
M5635215
UNIMET-PLUS 4
Aluminium
Light grey/window grey RAL
7035/7040
350x263x120mm



M5635235
UNIMET-PLUS 4H
Aluminium
Light grey/window grey RAL
7035/7040
350x263x120mm

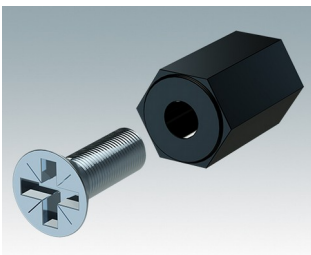


M5635315
UNIMET-PLUS 6
Aluminium
Light grey/window grey RAL
7035/7040
350x263x150mm

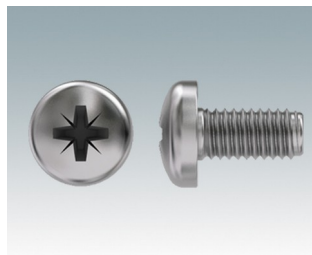


M5635335
UNIMET-PLUS 6H
Aluminium
Light grey/window grey RAL
7035/7040
350x263x150mm

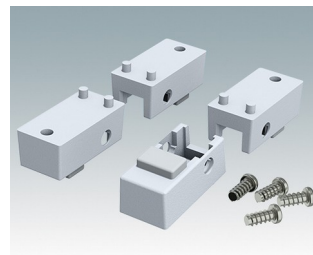
Accessory



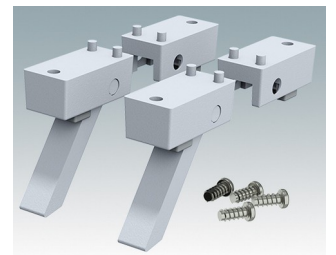
M5600001
PCB mounting kit
PA 6
Black RAL 9005



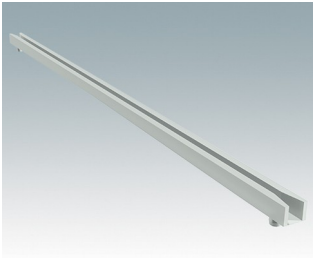
M5600010
PCB/Panel Fixing Screws, M3
Steel
Zinc coated
6mm



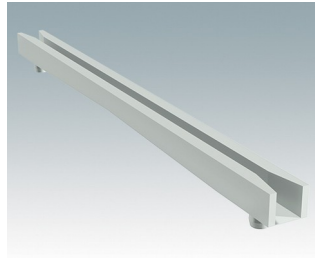
M5600015
Case Feet Kit 1
ABS (UL 94 HB)
Light grey RAL 7035
34x17x16mm



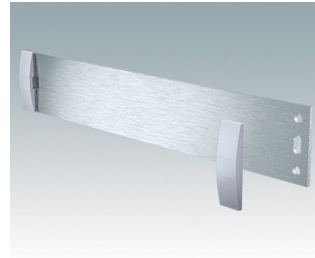
M5600045
Case Feet Kit 2
ABS (UL 94 HB)
Light grey RAL 7035
34x17x16mm



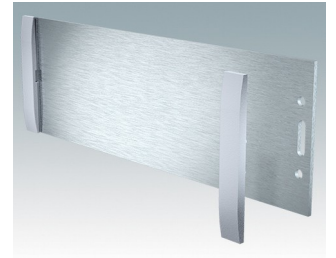
M5700202
PCB guide, 216mm
PA 6/6 (UL 94 V-2)
White



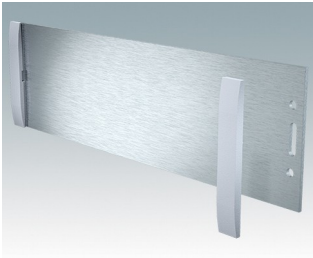
M5700203
PCB guide, 102mm
PA 6/6 (UL 94 V-2)
White



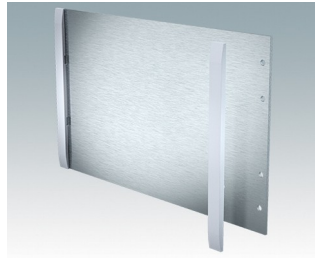
M5700607
Front panel kit (1/1H)
Aluminium
Matt anodised
199.5x2x33.6mm



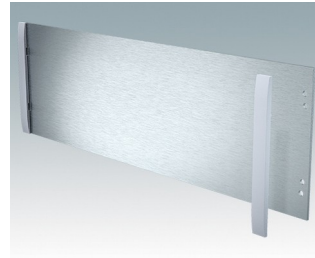
M5700608
Front panel kit (2/2H)
Aluminium
Matt anodised
199.5x2x65.1mm



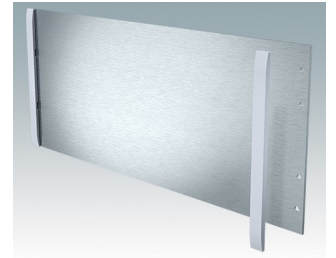
M5700613
Front panel kit (3/3H)
Aluminium
Matt anodised
219.5x2x65.1mm



M5700616
Front panel kit (5/5H)
Aluminium
Matt anodised
219.5x2x130.1mm



M5700620
Front panel kit (4/4H)
Aluminium
Matt anodised
319.5x2x100.1mm



M5700621
Front panel kit (6/6H)
Aluminium
Matt anodised
319.5x2x130.1mm

Subject to technical modification without notice. © OKW Enclosures Ltd