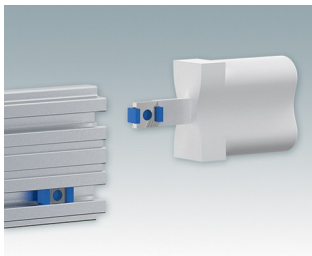
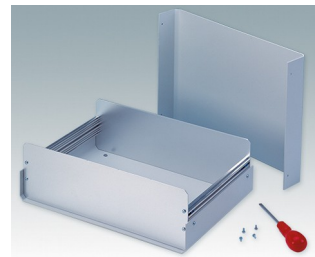
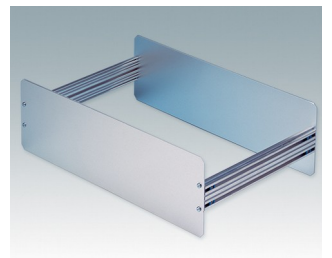


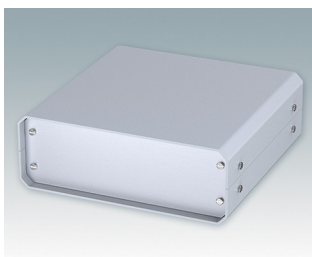
Versatile design ideal for customising

- Attractive and practical instrument enclosures with simple and fast assembly
- Easily customised to your exact specifications
- Ten standard sizes available in light grey and black
- Removable internal chassis
- PCB guide rails in the assembly extrusions
- Anodised aluminium front and rear panels included
- Front panels recessed to protect controls
- Four push-in non-slip rubber feet included.

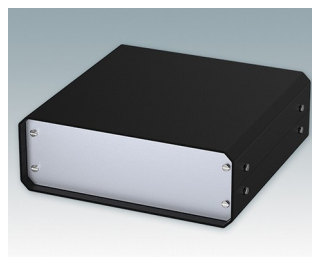
Order your own fully customised version [learn more here >>](#)



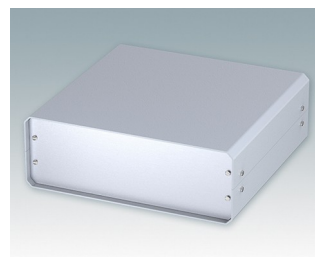
Select Versions



M5501110
UNICASE 1
Aluminium
Light grey RAL 7035
185x180x65mm



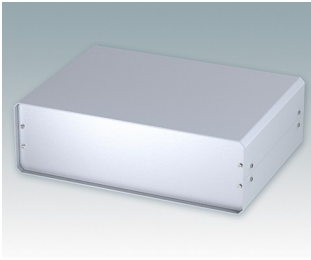
M5501119
UNICASE 1
Aluminium
Black RAL 9005
185x180x65mm



M5502110
UNICASE 2
Aluminium
Light grey RAL 7035
260x250x90mm



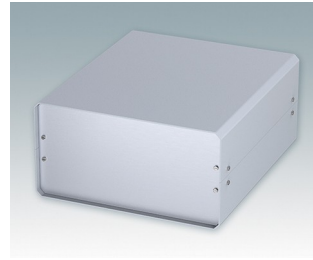
M5502119
UNICASE 2
Aluminium
Black RAL 9005
260x250x90mm



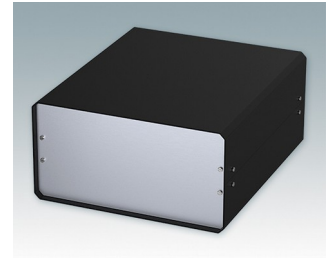
M5503110
UNICASE 3
Aluminium
Light grey RAL 7035
350x250x110mm



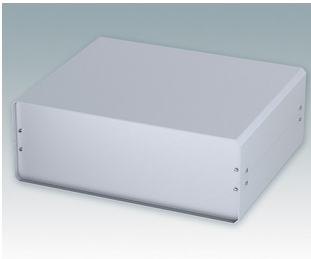
M5503119
UNICASE 3
Aluminium
Black RAL 9005
350x250x110mm



M5504110
UNICASE 4
Aluminium
Light grey RAL 7035
261x300x134.5mm



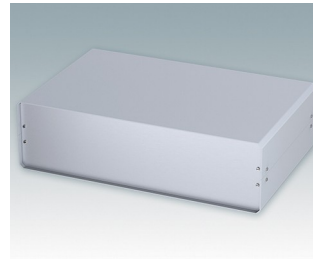
M5504119
UNICASE 4
Aluminium
Black RAL 9005
261x300x134.5mm



M5505110
UNICASE 5
Aluminium
Light grey RAL 7035
367x300x134.5mm



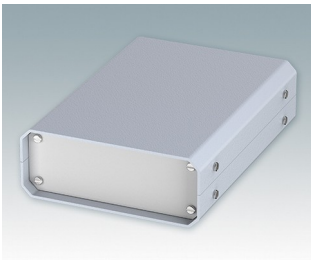
M5505119
UNICASE 5
Aluminium
Black RAL 9005
367x300x134.5mm



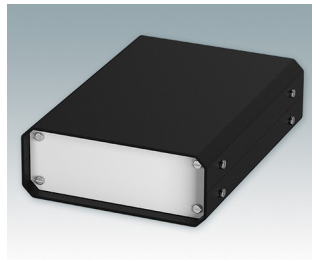
M5506110
UNICASE 6
Aluminium
Light grey RAL 7035
474x300x134.5mm



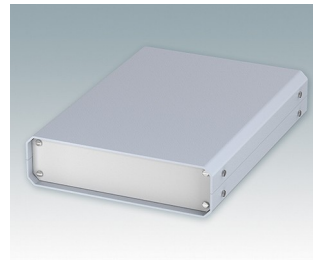
M5506119
UNICASE 6
Aluminium
Black RAL 9005
474x300x134.5mm



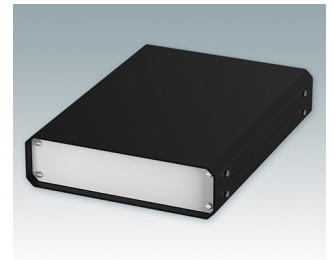
M5511110
UNICASE SL1
Aluminium
Light grey RAL 7035
130x180x50mm



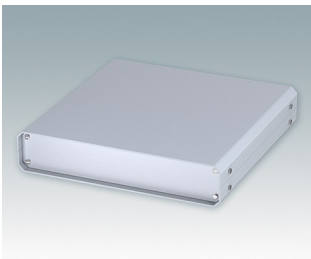
M5511119
UNICASE SL1
Aluminium
Black RAL 9005
130x180x50mm



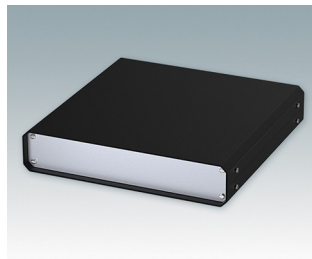
M5512110
UNICASE SL2
Aluminium
Light grey RAL 7035
185x250x50mm



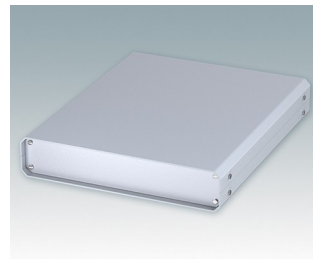
M5512119
UNICASE SL2
Aluminium
Black RAL 9005
185x250x50mm



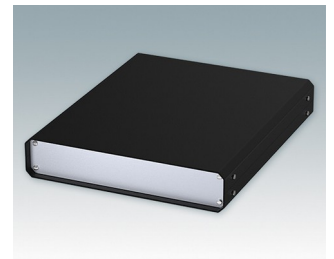
M5513110
UNICASE SL3
Aluminium
Light grey RAL 7035
250x250x50mm



M5513119
UNICASE SL3
Aluminium
Black RAL 9005
250x250x50mm

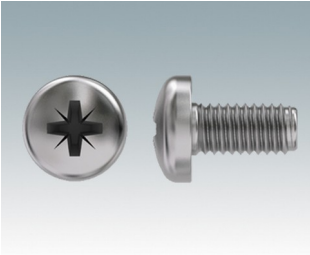


M5514110
UNICASE SL4
Aluminium
Light grey RAL 7035
250x300x50mm



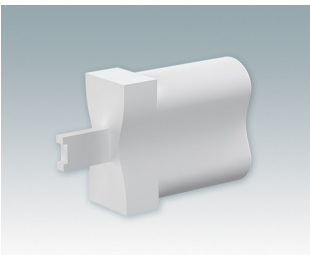
M5514119
UNICASE SL4
Aluminium
Black RAL 9005
250x300x50mm

Accessory "screws"



M5600010
PCB/Panel Fixing Screws, M3
Steel
Zinc coated
6mm

Accessory



M5500001
Unicase Assembly Tool
PA 2200 (Polyamide)
White
44x13x27mm

Subject to technical modification without notice. © OKW Enclosures Ltd