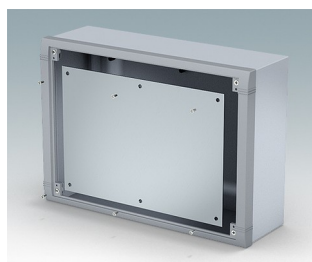
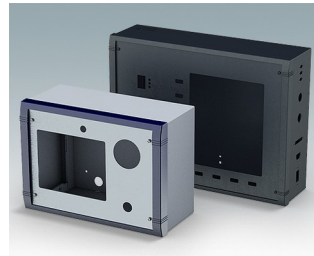


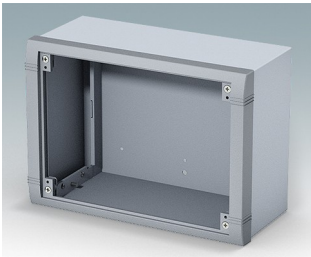
## Wall mount enclosures for indoor electronic instruments, controls and HMI

- Very modern design in three standard sizes
- Total access to the electronics during installation and servicing
- Rear section includes holes for fitting PCBs and internal mounting plates
- Cable glands and connectors can be mounted to the underside of the rear section
- Top section fits over the rear panel and also secures the front bezel
- Die cast front bezel provides a modern look to the cases
- Front panels recessed in the bezel to protect controls
- Pre-punched wall mounting points in the rear panel
- Four M4 earth studs provided inside
- Two standard colour combinations grey or black
- All fixings supplied with case
- Accessory anodised aluminium front panels
- Accessory internal mounting plate kit and PCB screw pillars.

Order your own fully customised version [learn more here >>](#)



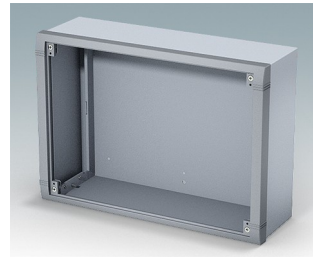
## Select Versions



**M5825105**  
Datamet S  
Aluminium  
Light grey/window grey RAL  
7035/7040  
250x180x116.5mm



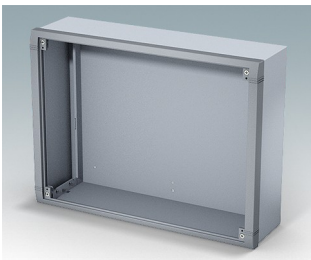
**M5825109**  
Datamet S  
Aluminium  
Black RAL 9005  
250x180x116.5mm



**M5835105**  
Datamet M  
Aluminium  
Light grey/window grey RAL  
7035/7040  
350x250x116.5mm



**M5835109**  
Datamet M  
Aluminium  
Black RAL 9005  
350x250x116.5mm

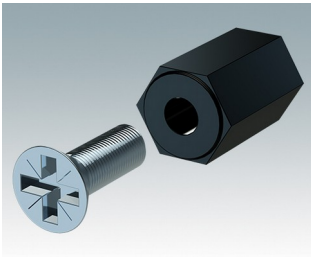


**M5840105**  
Datamet L  
Aluminium  
Light grey/window grey RAL  
7035/7040  
400x300x116.5mm

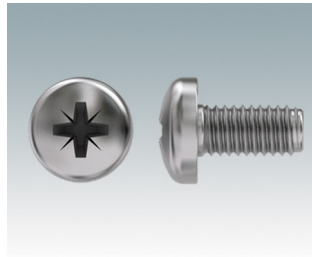


**M5840109**  
Datamet L  
Aluminium  
Black RAL 9005  
400x300x116.5mm

## Accessory



**M5600001**  
PCB mounting kit  
PA 6  
Black RAL 9005



**M5600010**  
PCB/Panel Fixing Screws, M3  
Steel  
Zinc coated  
6mm



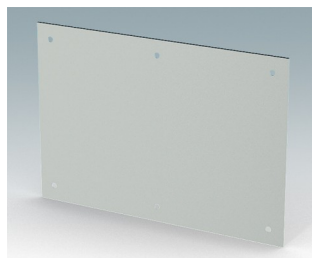
**M5800025**  
Front panel S  
Aluminium  
Matt anodised  
220x2x159.5mm



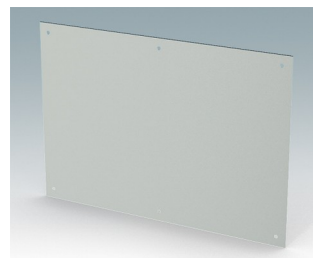
**M5800035**  
Front panel M  
Aluminium  
Matt anodised  
320x2x229.5mm



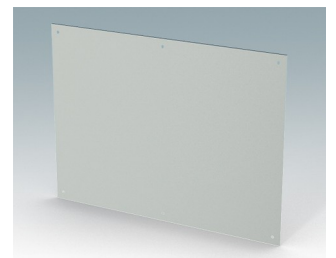
**M5800040**  
Front panel L  
Aluminium  
Matt anodised  
370x2x279.5mm



**M5804125**  
Mounting plate kit S  
Aluminium  
Matt anodised  
175x120x1.5mm



**M5804135**  
Mounting plate kit M  
Aluminium  
Matt anodised  
275x190x1.5mm



**M5804140**  
Mounting plate kit L  
Aluminium  
Matt anodised  
325x240x1.5mm

