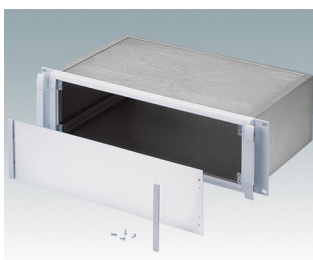
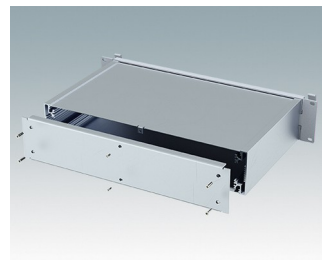
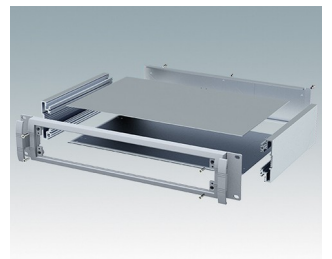
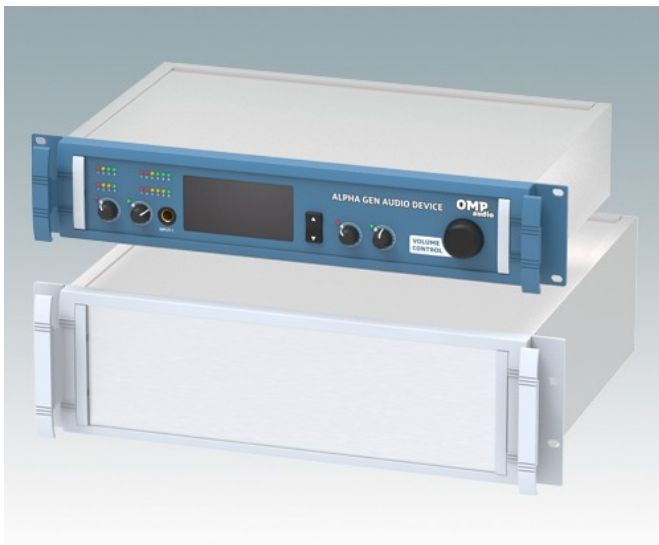


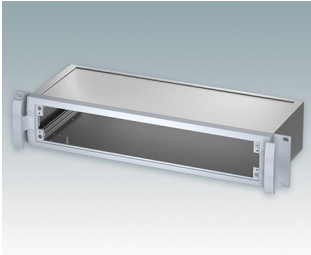
Robust 19" rack mount enclosures to DIN 41494 and IEC 60297-3

- Exclusive range of 19" rack cases in aluminium in 2U and 3U sizes
- Three standard depths, custom sizes to order
- Attractive diecast front bezel incorporating unique 'comfort-handles' and rack mounting ears powder painted light grey, RAL 7035
- Robust case body assembly includes flat top and base panels, two side extrusions and the rear panel
- Side extrusions, top, base and rear panels are supplied coated in **Iridite NCP** clear conductive finish
- Internal guide rails for PCBs and chassis plates
- Front panel (accessory) recessed in bezel for locating keypads or labels
- Accessory internal mounting plates
- Cases supplied fully assembled.

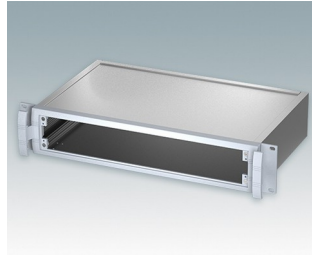
Order your own fully customised version [learn more here >>](#)



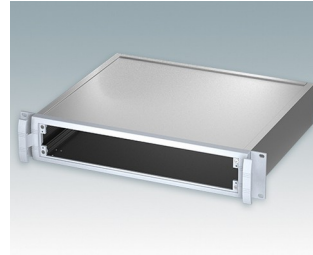
Select Versions



M5920015
 METTEC 19" 2Ux167mm
 Aluminium
 Light grey RAL 7035
 88x482.6x167.5mm



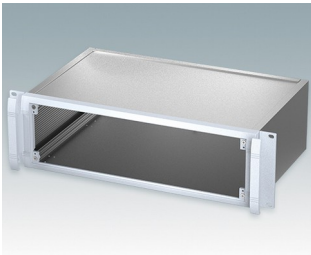
M5920025
 METTEC 19" 2Ux267mm
 Aluminium
 Light grey RAL 7035
 88x482.6x267.5mm



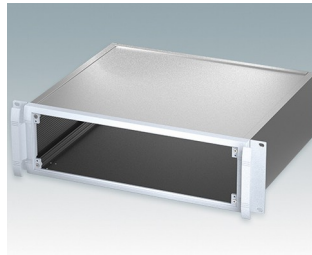
M5920035
 METTEC 19" 2Ux367mm
 Aluminium
 Light grey RAL 7035
 88x482.6x367.5mm



M5930015
 METTEC 19" 3Ux167mm
 Aluminium
 Light grey RAL 7035
 132.6x482.6x167.5mm



M5930025
 METTEC 19" 3Ux267mm
 Aluminium
 Light grey RAL 7035
 132.6x482.6x267.5mm

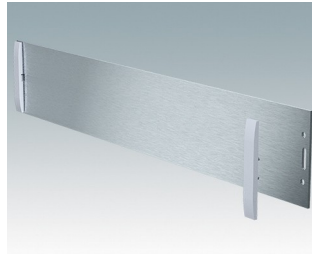


M5930035
 METTEC 19" 3Ux367mm
 Aluminium
 Light grey RAL 7035
 132.6x482.6x367.5mm

Accessory



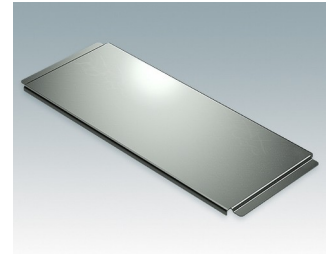
M5900016
 19" mounting kit
 Black RAL 9005



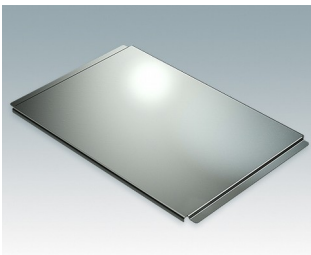
M5900020
 Front panel kit (2U)
 Aluminium
 Matt anodised
 392.5x2x67.1mm



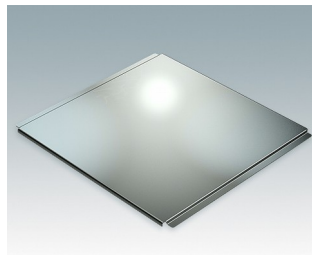
M5900030
 Front panel kit (3U)
 Aluminium
 Matt anodised
 392.5x2x111mm



M5900201
 Chassis plate (167mm)
 Aluminium
 Natural finish
 377x149x7.5mm



M5900202
 Chassis plate (267mm)
 Aluminium
 Natural finish
 377x249x7.5mm



M5900203
 Chassis plate (367mm)
 Aluminium
 Natural finish
 377x349x7.5mm



M6000035
 19" mounting kit
 Light grey RAL 7035