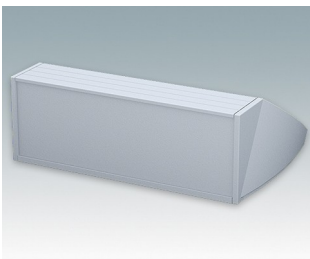
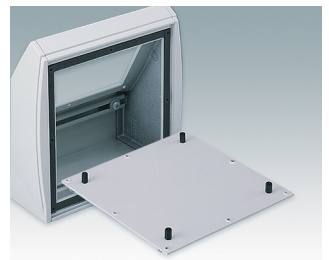
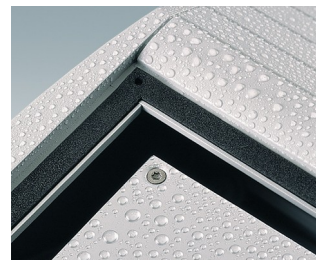
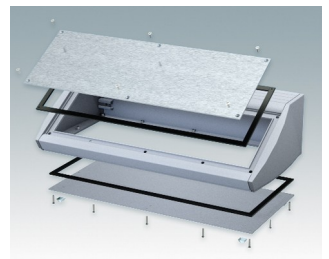
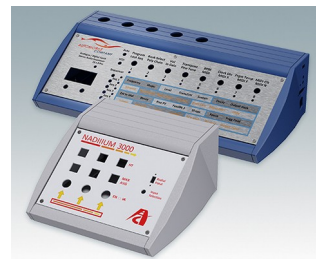


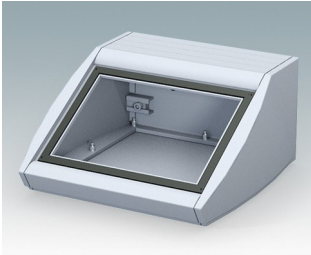
Sloping front terminal enclosures

- Ergonomic aluminium instrument enclosures for desktop and wall mounted applications
- Very robust design in three standard sizes and two colours: light grey and black
- Optional IP 54 models (VDE tested) with gaskets for the front and base panels
- Pre-assembled aluminium case body with flat rear panel for connectors, switches, power inlets etc.
- Stainless steel M3 Torx® T10 and MS M3 Pozidriv fixings supplied
- Four non-slip rubber feet included
- Accessory front panel is recessed for a membrane keypad
- Pre-punched PCB fixing points in base
- For IP 54 protection accessory PCB pillars are required
- Accessory wall mounting kit.

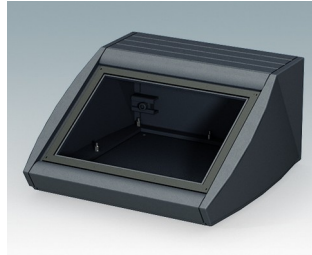
Order your own fully customised version [learn more here >>](#)



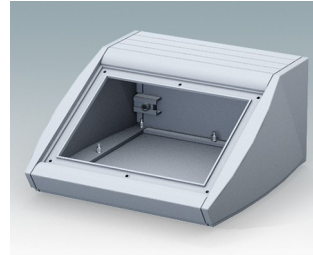
Select Versions



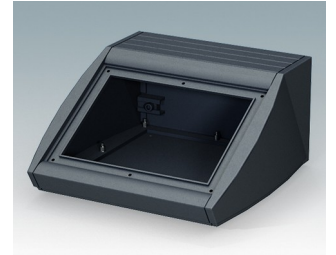
M5320105
UNIDESK M200 IP 54
Aluminium
Light grey RAL 7035
200x200x102mm
IP 54



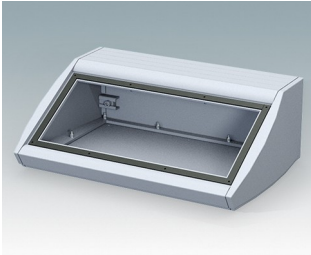
M5320109
UNIDESK M200 IP 54
Aluminium
Black RAL 9005
200x200x102mm
IP 54



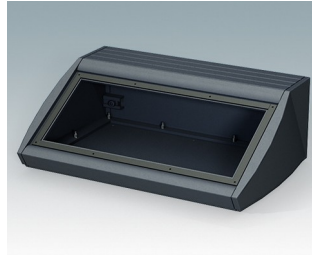
M5320115
UNIDESK M200
Aluminium
Light grey RAL 7035
200x200x102mm



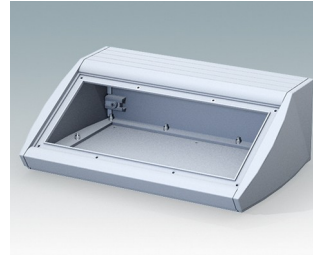
M5320119
UNIDESK M200
Aluminium
Black RAL 9005
200x200x102mm



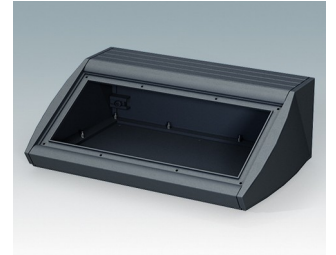
M5330105
UNIDESK M300 IP 54
Aluminium
Light grey RAL 7035
300x200x102mm
IP 54



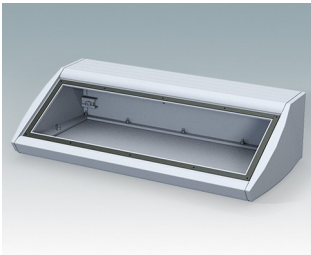
M5330109
UNIDESK M300 IP 54
Aluminium
Black RAL 9005
300x200x102mm
IP 54



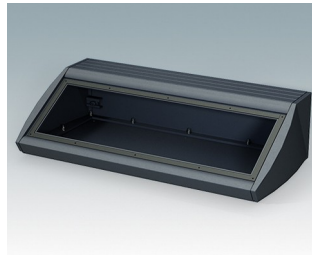
M5330115
UNIDESK M300
Aluminium
Light grey RAL 7035
300x200x102mm



M5330119
UNIDESK M300
Aluminium
Black RAL 9005
300x200x102mm



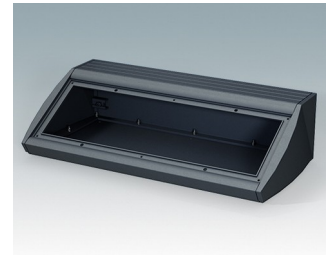
M5340105
UNIDESK M400 IP 54
Aluminium
Light grey RAL 7035
400x200x102mm
IP 54



M5340109
UNIDESK M400 IP 54
Aluminium
Black RAL 9005
400x200x102mm
IP 54

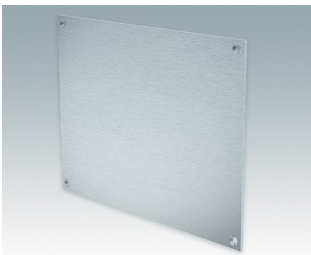


M5340115
UNIDESK M400
Aluminium
Light grey RAL 7035
400x200x102mm

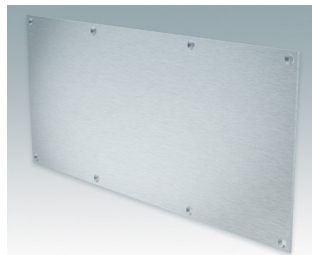


M5340119
UNIDESK M400
Aluminium
Black RAL 9005
400x200x102mm

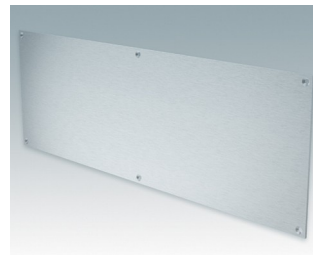
Accessory



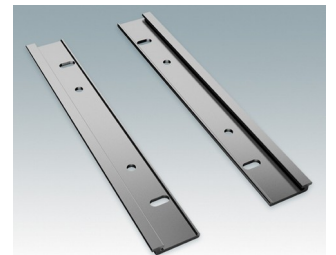
M5301502
Front panel M200
Aluminium
Matt anodised
170x2x123mm



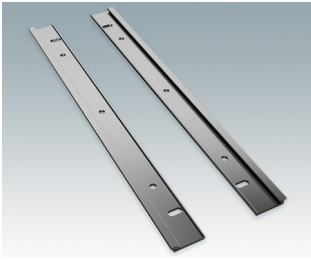
M5301503
Front panel M300
Aluminium
Matt anodised
270x2x123mm



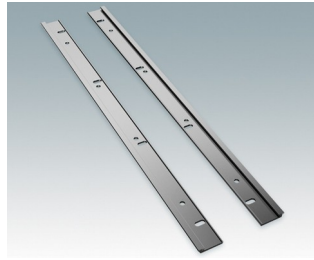
M5301504
Front panel M400
Aluminium
Matt anodised
370x2x123mm



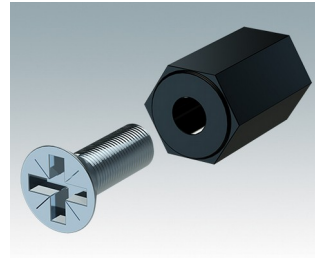
M5302212
Wall mount kit M200
Aluminium
Matt anodised



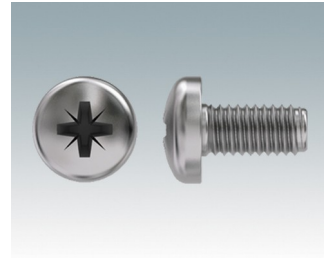
M5302213
Wall mount kit M300
Aluminium
Matt anodised



M5302214
Wall mount kit M400
Aluminium
Matt anodised



M5600001
PCB mounting kit
PA 6
Black RAL 9005



M5600010
PCB/Panel Fixing Screws, M3
Steel
Zinc coated
6mm

Subject to technical modification without notice. © OKW Enclosures Ltd