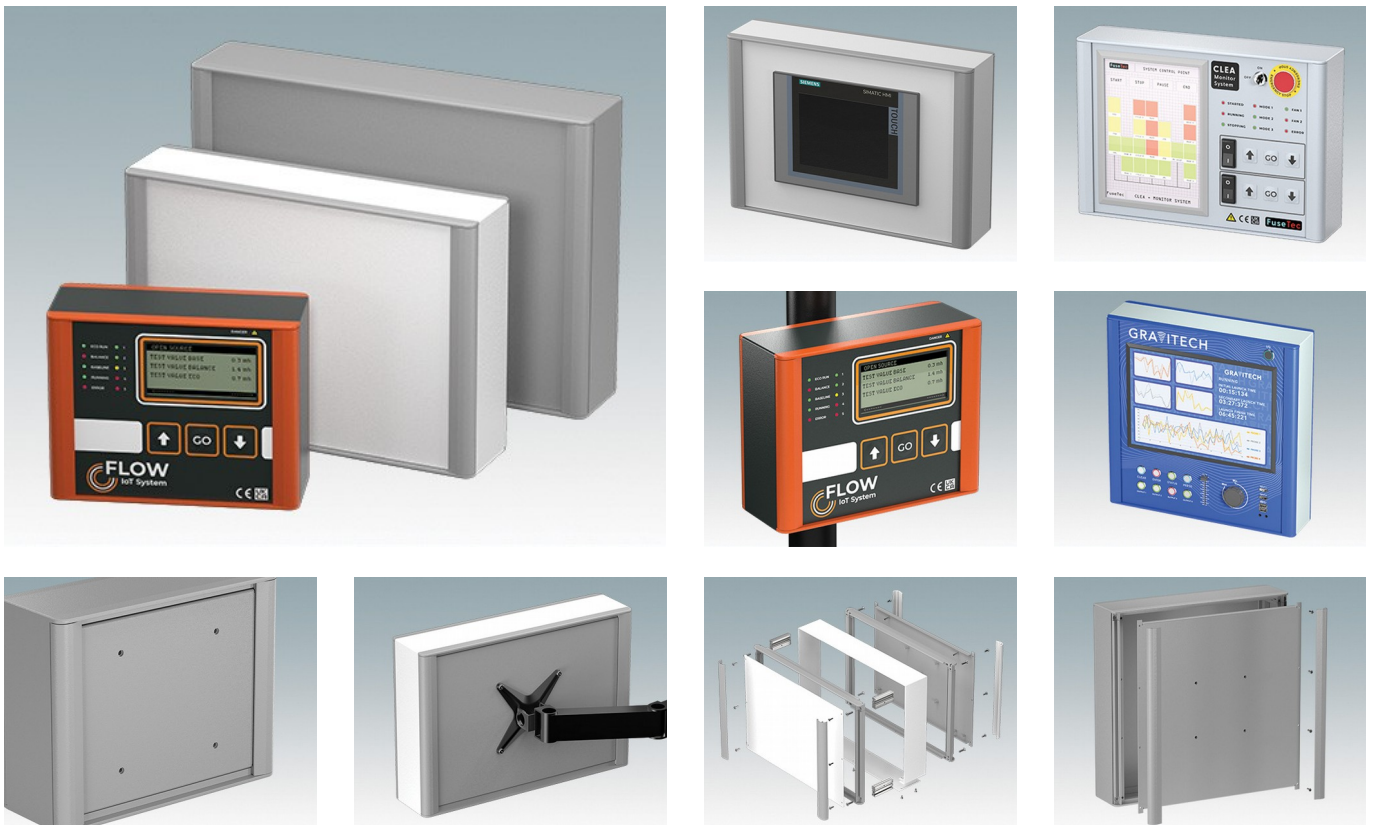


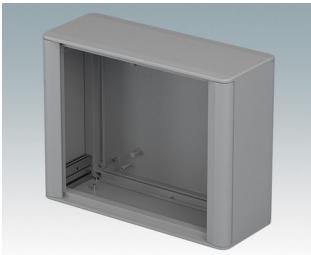
Modern, highly versatile VESA-mount enclosures for HMI, electronic controls, instrumentation

- Advanced aluminium housings developed for the installation of standard displays, panel PCs, HMIs (Siemens, Turck Banner, Beijer, Beckhoff, B&R...) and touchscreens of various sizes
- Cohesive design in four standard sizes with a slim profile just 95 mm deep
- Suitable for **Siemens TP** displays, model types KTP400 to TP1200 – [Download datasheet >>](#)
- Compatible with **Turck Banner** displays, model types TX705 to TX810 – [Download datasheet >>](#)
- Compatible with **Beijer** displays model types X2 – [Download datasheet >>](#)
- Standard VESA MIS-D 100 mounting on the rear for a control arm, wall bracket etc.
- Diecast front/rear bezels fit flush with the case body for a smooth appearance
- Standard internal mounting options – M3 PCB pillars on the rear panel, M3 holes and guide rails in the assembly extrusions for holding internal plates
- Clever internal extrusion design means the product is cost-effective, yet easy to customise in any size, with excellent space for connectors
- Snap-on trims in the front/rear bezels hide all the assembly screws
- Removable base panel on the underside with space for cable entry
- All case panels fitted with M4 threaded pillars for earth connections
- Anodised and painted front panels (accessories) – recessed in the bezels to protect displays, keypads etc.
- Direct wall/machine mounting (with accessory kit)
- Accessory pole mounting bracket for poles ø50 mm or larger
- Accessory internal mount plate kit.

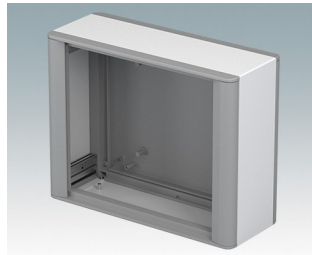
Order your own fully customised version [learn more here >>](#)



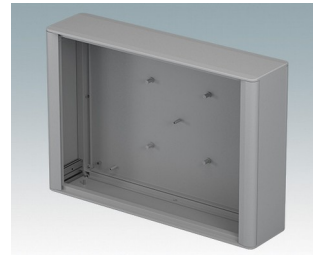
Select Versions



M7023002
TECHNOMET-CONTROL
C218V
Aluminium
Traffic grey A RAL 7042
230x180x95mm



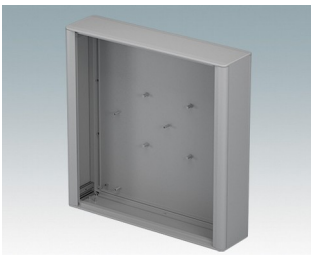
M7023006
TECHNOMET-CONTROL
C218V
Aluminium
Traffic white/traffic grey A RAL
9016/7042
230x180x95mm



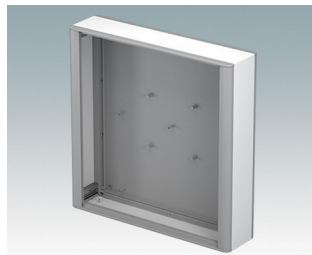
M7036102
TECHNOMET-CONTROL
C325V
Aluminium
Traffic grey A RAL 7042
360x250x95mm



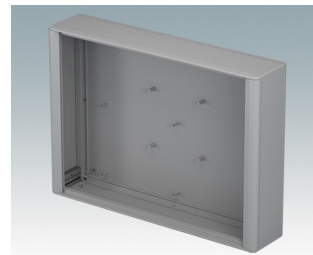
M7036106
TECHNOMET-CONTROL
C325V
Aluminium
Traffic white/traffic grey A RAL
9016/7042
360x250x95mm



M7036402
TECHNOMET-CONTROL
C36V
Aluminium
Traffic grey A RAL 7042
360x360x95mm



M7036406
TECHNOMET-CONTROL
C36V
Aluminium
Traffic white/traffic grey A RAL
9016/7042
360x360x95mm



M7042202
TECHNOMET-CONTROL
C430V
Aluminium
Traffic grey A RAL 7042
420x300x95mm



M7042206
TECHNOMET-CONTROL
C430V
Aluminium
Traffic white/traffic grey A RAL
9016/7042
420x300x95mm

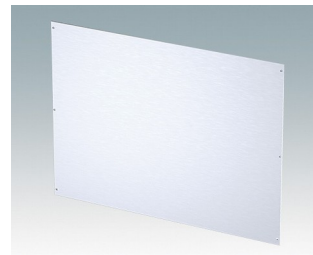
Accessory



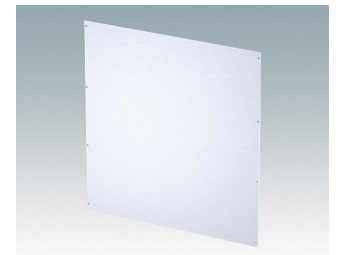
M7000700
Front Panel A – C218
Aluminium
Matt anodised
202x2x170.8mm



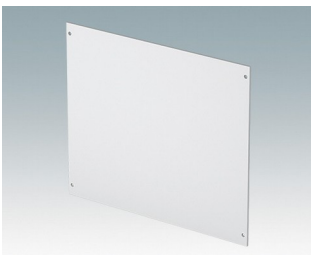
M7000702
Front Panel A – C325
Aluminium
Matt anodised
332x2x240.8mm



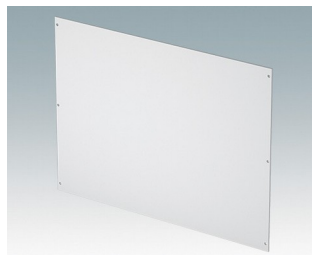
M7000704
Front Panel A – C336
Aluminium
Matt anodised
332x2x350.8mm



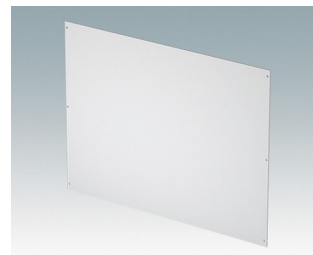
M7000706
Front Panel A – C430
Aluminium
Matt anodised
392x2x290.8mm



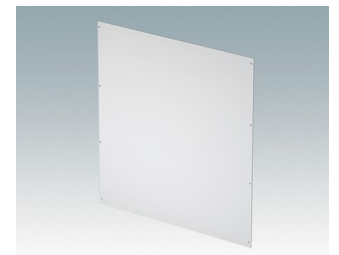
M7000720
Front Panel P – C218
Aluminium
Traffic white RAL 9016
202x2x170.8mm



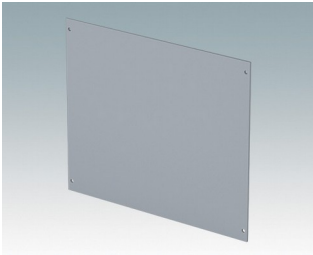
M7000722
Front Panel P – C325
Aluminium
Traffic white RAL 9016
332x2x240.8mm



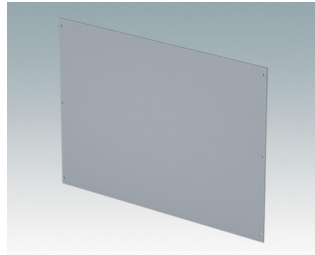
M7000724
Front Panel P – C336
Aluminium
Traffic white RAL 9016
332x2x350.8mm



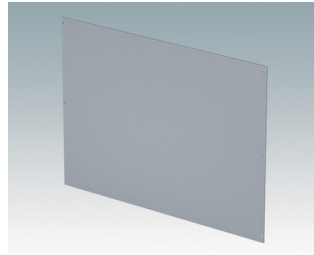
M7000726
Front Panel P – C430
Aluminium
Traffic white RAL 9016
392x2x290.8mm



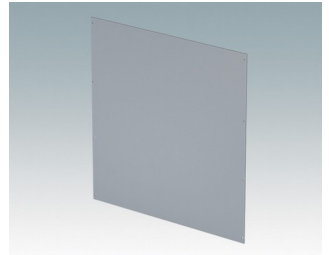
M7000740
 Front Panel P – C218
 Aluminium
 Traffic grey A RAL 7042
 202x2x170.8mm



M7000742
 Front Panel P – C325
 Aluminium
 Traffic grey A RAL 7042
 332x2x240.8mm



M7000744
 Front Panel P – C336
 Aluminium
 Traffic grey A RAL 7042
 332x2x350.8mm



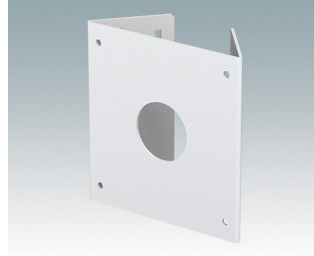
M7000746
 Front Panel P – C430
 Aluminium
 Traffic grey A RAL 7042
 392x2x290.8mm



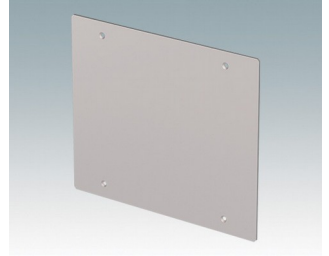
M7000900
 Wall Mounting Kit S
 Mild Steel CR4
 Traffic white RAL 9016
 157x145x16mm



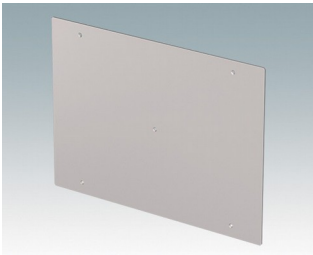
M7000905
 Wall Mounting Kit L
 Mild Steel CR4
 Traffic white RAL 9016
 225x235x16mm



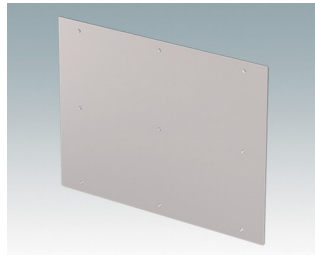
M7000920
 Pole Mount Bracket
 Mild Steel CR4
 Traffic white RAL 9016
 120x125x45mm



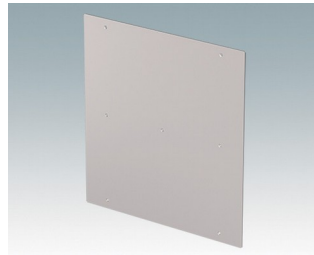
M7000940
 Internal Mounting Plate Kit –
 C218
 Aluminium
 Natural finish
 181x155x1.5mm



M7000942
 Internal Mounting Plate Kit –
 C325
 Aluminium
 Natural finish
 311x225x1.5mm



M7000944
 Internal Mounting Plate Kit –
 C336
 Aluminium
 Natural finish
 311x335x1.5mm



M7000946
 Internal Mounting Plate Kit –
 C430
 Aluminium
 Natural finish
 371x275x1.5mm

Subject to technical modification without notice. © OKW Enclosures Ltd